



**Where were you on  
September 11, 2001?**



## IMPACT OF 9/11

- LOSS OF LIFE
- LOSS OF PROPERTY
- LOSS OF SECURITY
- WAR
- FOREVER ALTERED OUR WAY OF LIFE
- PLACED THE NATION IN A STATE OF MOURNING

## QUESTIONS THAT AROSE

- HOW COULD THIS HAPPEN TO US?
  - WHY DID IT HAPPEN TO US?
  - WHO IS RESPONSIBLE?
- HOW DID THOSE RESPONSIBLE DO THIS?
- WHAT CAN WE DO AS A NATION TO KEEP THIS FROM HAPPENING AGAIN?

## LAW ENFORCEMENT'S CHALLENGE

- INTERNATIONAL ASSOCIATION OF CHIEFS OF POLICE MET IN TORONTO IN THE FALL OF 2001.
- THEY AGREED THAT A COMPREHENSIVE STUDY WAS NEEDED TO ASSESS INTELLIGENCE INADEQUACIES.

# CRIMINAL INTELLIGENCE SUMMIT



- Held in the Spring of 2002.
- Their conclusions were that Federal, State, Tribal and local law enforcement must work towards a common goal. They must gather information, produce intelligence and share that intelligence with other law enforcement and public safety agencies, so that information could be analyzed to help identify and neutralize threats.
- The Summit called for a National Intelligence Plan.

# Global Intelligence Working Group

- The working group included members of Local, State, and Tribal law enforcement.
- They identified barriers that limited the flow of information between jurisdictional and agency boundaries.
- Saw a need to identify an intelligence information sharing capability that could be widely accessed by local, state, tribal and federal law enforcement and public safety agencies.

# GLOBAL INTELLIGENCE WORKING GROUP RECOMMENDATIONS

The GIWVG made twenty-eight recommendations, in their National Intelligence Sharing Plan.

Some were innovative and foreign to the intelligence field.



## RECOMMENDATION # 7

- Local, state, tribal and federal law enforcement agencies must recognize and *partner with the public and private sectors* in order to detect and prevent attacks to the nation's critical infrastructures. Steps should be taken to establish regular communications and methods of information exchange.

## RECOMMENDATION #14

- To foster trust among law enforcement agencies, policy makers, and the communities they serve, the National Criminal Intelligence Sharing Plan promotes a policy of *openness to the public* regarding the criminal intelligence function, when it does not affect the security and integrity of the process.

## CONCLUSION OF GIWG NCISP

- In Summary, the NCISP, said law enforcement must work *together*. We must have a mechanism to gather information and disseminate intelligence and the intelligence function must *PARTNER* with the private sector.

# National Priority

Strengthen Information  
Sharing and  
Collaboration  
Capabilities

## ACCOMPLISHING THE GOALS OF THE GIWVG

- The recommendations of the GIWVG led to the establishment of Fusion Centers across the country.

# FUSION



- “Fusion” refers to the overarching process of managing the flow of information and intelligence across all levels and sectors of government and private industry.

# FUSION CENTERS

- BRING DIFFERENT AGENCIES TOGETHER: REPRESENTATIVES FROM DIFFERENT ENTITIES SHARE THE SAME PHYSICAL SPACE AND WORK SIDE BY SIDE. THE PARTICIPATING AGENCIES POOL RESOURCES AND SERVE AS A CENTRAL HUB FOR THE GATHERING OF INFORMATION, ANALYSIS AND DISSEMINATION OF INTELLIGENCE.

# INFORMATION VS. INTELLIGENCE

- Information: Pieces of raw, unanalyzed data that identify persons, evidence, or events or illustrate processes that indicate the incidence of a criminal event, or evidence of a criminal event.
- Intelligence is produced by analyzing raw information related to crimes or crime patterns with respect to an identifiable person or group of persons in an effort to anticipate, prevent or monitor possible criminal activity.



# PRINCIPAL ROLE OF FUSION CENTERS

- The principal role of the fusion center is to compile, analyze, and disseminate criminal/terrorist information and intelligence and other information to support efforts to anticipate, identify, prevent, and/or monitor criminal/terrorist activity.

# PROCESS



# FUSION

Turning  
information and intelligence  
into actionable knowledge!

# PRIMARY FOCUS

- Nontraditional collectors of intelligence



# OKLAHOMA'S RESPONSE



# MISSION STATEMENT

The Oklahoma Information Fusion Center will serve as the focal point for the collection, assessment, analysis, and dissemination of terrorism intelligence and other criminal activity information relating to the State of Oklahoma. The center will also support the state's "all hazards" approach to preparedness for terrorist attacks, natural disasters and other events.

# GOAL ONE

To establish and maintain an information clearinghouse designed to accept and appropriately process intelligence information provided by law enforcement agencies, public safety agencies, private sector agencies, and concerned citizens.

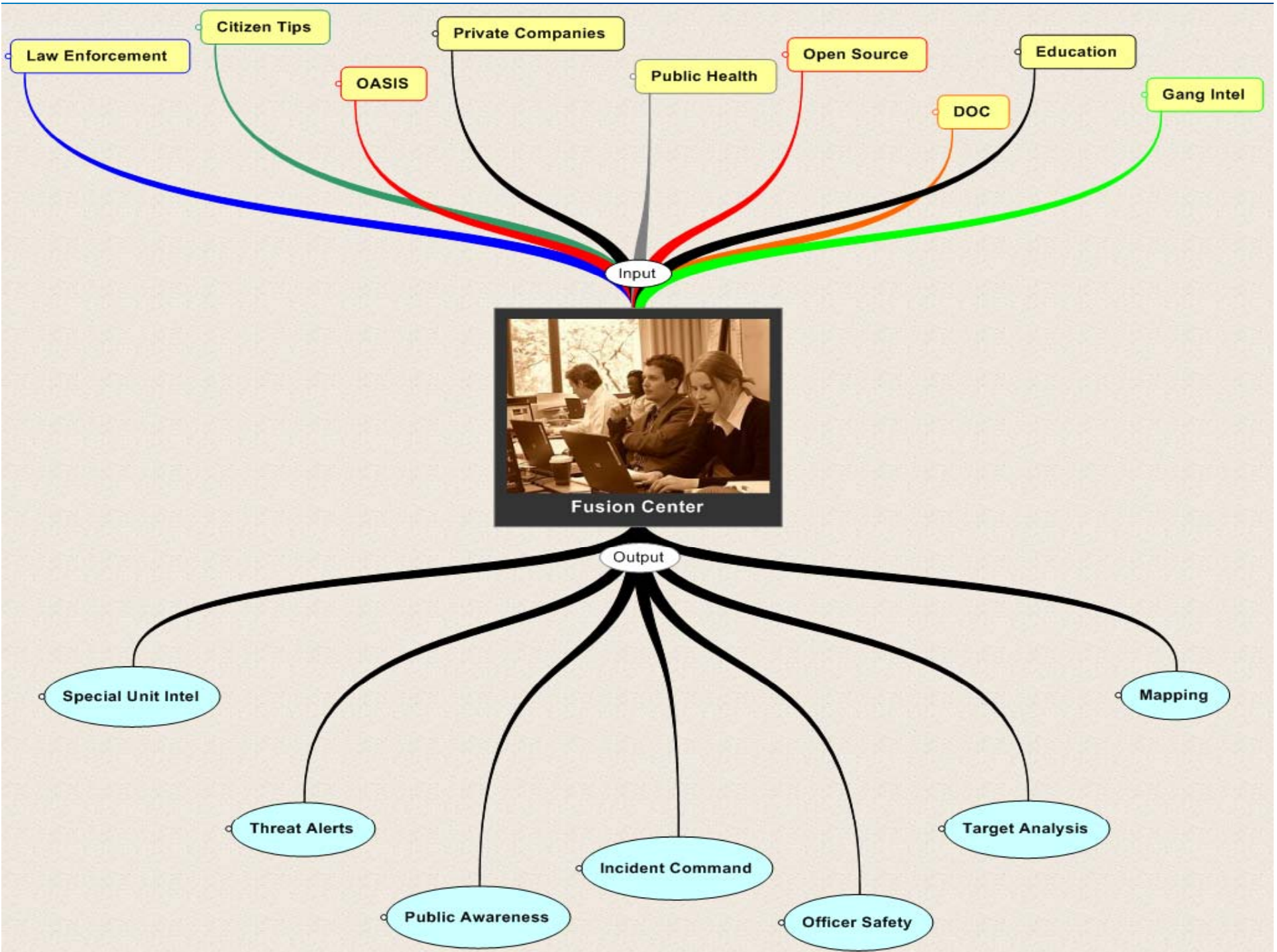
## GOAL TWO

To provide informative reports and intelligence assessments, both strategic and tactical, to be used in strengthening homeland security initiatives in Oklahoma and the United States.



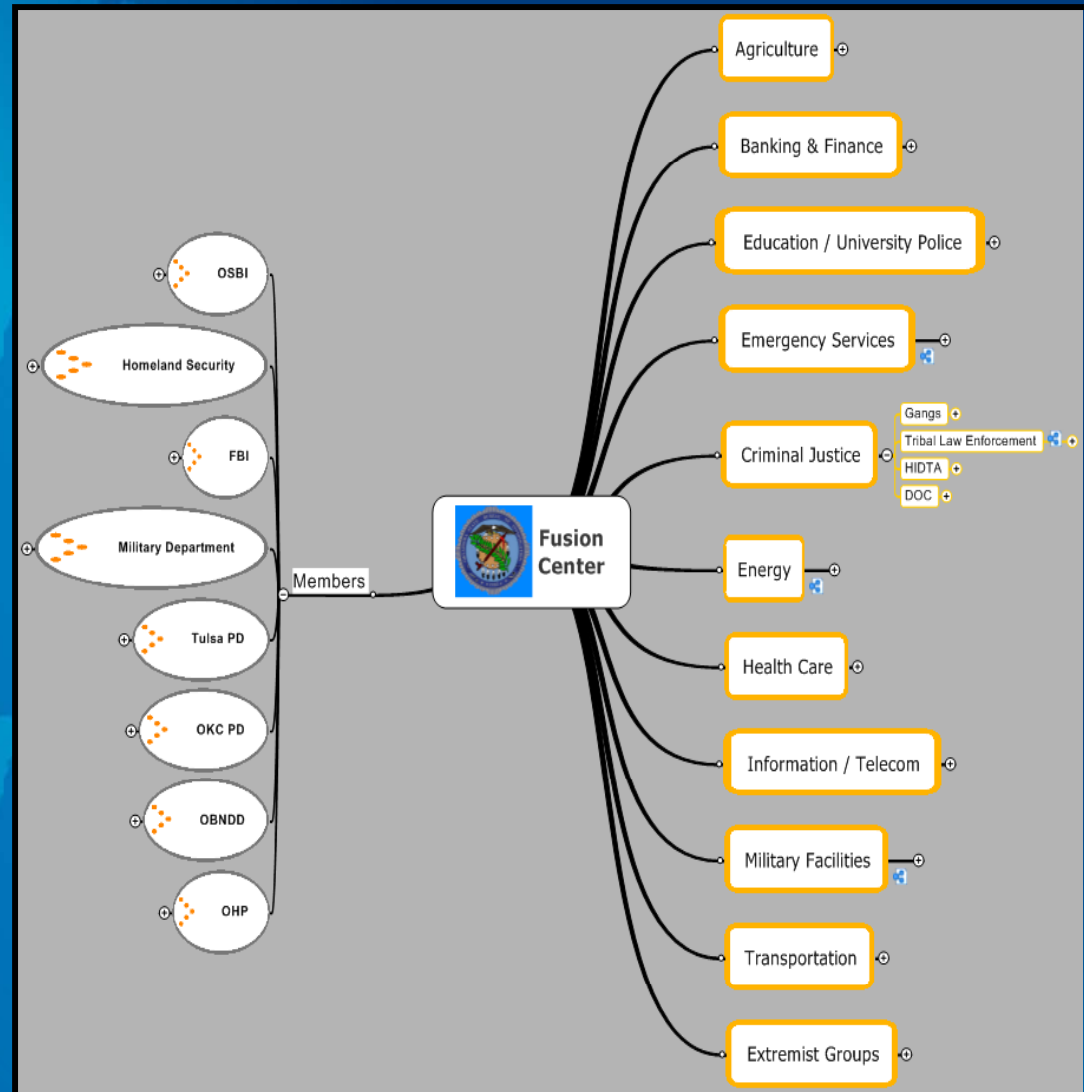
## GOAL THREE

To reach out to the public and private sector for information sharing and collection.



# Oklahoma Fusion Center

- OSBI HOST AGENCY
- FUNDED BY DHS GRANT \$975,000
- 8 Agencies
- 18 Analysts



# PARTICIPATING AGENCIES

- DEPARTMENT OF HOMELAND SECURITY
- FEDERAL BUREAU OF INVESTIGATION
- OKLAHOMA STATE BUREAU OF INVESTIGATION
- OKLAHOMA DEPARTMENT OF PUBLIC SAFETY
- OKLAHOMA NATIONAL GUARD
- OKLAHOMA CITY POLICE DEPARTMENT
- TULSA POLICE DEPARTMENT
- BUREAU OF ALCOHOL TOBACCO AND FIREARMS

# MONITORING THE WORLD



- LOCAL MEDIA
- NATIONAL MEDIA
- WORLD MEDIA
- LAW ENFORCEMENT BULLETINS
- INTELLIGENCE PRODUCTS
- LAW ENFORCEMENT REPORTS
- INTERNET

# Ask the Oklahoma Question



# What implications could National and Global events...



...hold for us in Oklahoma?



**“Don’t depend on the enemy  
not coming, rather depend on  
being ready for him.”**

**Sun Tzu-The Art of War**



# PRIVACY

- Intelligence Collection 28 CFR Part 23 compliant.
- Only intelligence collected in a lawful manner will be maintained
- No information may be collected concerning political, religious or social views, associations or activities of any individual, group or organization unless the information directly relates to criminal conduct and there is reasonable suspicion the individual, group or organization is involved in the illegal conduct or activity.

# PRIVACY

- AGENCIES PARTICIPATING IN THE OKLAHOMA INFORMATION FUSION CENTER AND PROVIDING DATA REMAIN THE OWNERS OF THE DATA THEY CONTRIBUTED.
- INFORMATION OBTAINED MAY ONLY BE USED FOR LAWFUL PURPOSES.
- DATA WILL ONLY BE USED IN SUPPORT OF OFFICIAL LAW ENFORCEMENT ACTIVITIES (TO PREVENT A CRIMINAL ACT OR OTHER THREAT TO PUBLIC SAFETY )

# OPENNESS

- IT IS THE INTENTION OF THE OKLAHOMA INFORMATION FUSION CENTER TO BE OPEN WITH THE PUBLIC CONCERNING DATA COLLECTION PRACTICES, WHEN SUCH OPENNESS WILL NOT JEOPARDIZE ONGOING CRIMINAL INVESTIGATIVE ACTIVITIES.

## HELP WANTED

- SUBJECT MATTER EXPERTS
- INFORMATION
- AWARENESS
- SHARE YOUR EXPERTISE
- AVENUES FOR SHARING OF INFORMATION

## AGRICULTURE

- MECHELLE HAMPTON
- TULSA POLICE  
DEPARTMENT
- 918/ 828-5849

## **BANKING AND FINANCE**

- **ANGELA SANDERSFIELD**
- **OKLAHOMA STATE BUREAU  
OF INVESTIGATION**
- **405/ 879-2975**

## EDUCATION

- DR. BRENDA SALGADO
- OKLAHOMA STATE BUREAU  
OF INVESTIGATION
- 405/ 879-2636

# ENERGY MILITARY FACILITIES

- GARY JONES
- OKLAHOMA STATE BUREAU  
OF INVESTIGATION
- 405/ 879-2581



## EMERGENCY SERVICES

- NICK CHAFFIN
- OKLAHOMA STATE BUREAU  
OF INVESTIGATION
- 405/ 879-2577

## HEALTH CARE

A faint, light blue world map is visible in the background of the slide, centered behind the text.

- RICK WEIGEL
- TULSA POLICE  
DEPARTMENT
- 918/ 828-5849

## INFORMATION AND TELECOMMUNICATION

- MARY JANE COOK
- OKLAHOMA STATE BUREAU  
OF INVESTIGATION
- 405/ 879-2645

# TRANSPORTATION

A world map is visible in the background, rendered in a lighter shade of blue against the darker blue background of the slide.

- DIANE HOGUE
- OKLAHOMA DEPARTMENT  
OF PUBLIC SAFETY
- 405/ 425-2621

# Oklahoma Homeland Security Strategy (2006)

Goal #7: Enhance information sharing and fusion systems within the state between federal, state, tribal, local and private sector entities.....

# Conceptual Drawing of Watch Room



# CONNECTING THE DOTS



- SIMPLY PUT, THE OKLAHOMA INFORMATION FUSION CENTER SEEKS TO CONNECT SEEMINGLY UNCONNECTED PIECES OF INFORMATION IN ORDER TO IDENTIFY, PREDICT AND DETER THOSE WHO WOULD HARM THE PEOPLE AND STATE OF OKLAHOMA.

**“Terrorism is cyclical. Left alone, it will always come back, usually in a bolder and more lethal way than before.” Neil Herman-FBI**





# MURRAH BOMBING 1995



# BESLAN SCHOOL SIEGE 2004

“Everything that has happened in Russia will happen in America, only worse.”  
bin Laden



## “PREVENTION THROUGH AWARENESS”

- WITH YOUR HELP WE MAY BE ABLE TO PREVENT ANOTHER TRAGEDY.

**WE WILL NEVER FORGET**



# OKLAHOMA INFORMATION FUSION CENTER

- AGENT IN CHARGE  
BRYAN RIZZI
- OKLAHOMA STATE BUREAU  
OF INVESTIGATION
  - 405/ 879-2685